

410D01 Firmware Update Instructions

Preface:

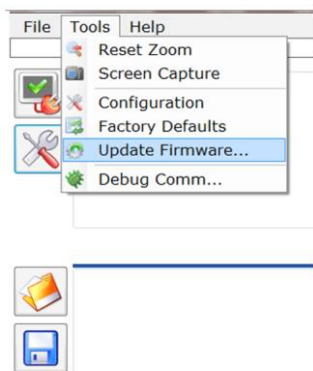
Pre-release versions of the 410D01 may have shipped with out-of-date firmware, which affects some instrument functionality. Specifically, end users may find that the manual zero method not functioning properly when utilizing the manual zero method with the DC coupling feature. To address this issue PCB is adding the updated firmware on the 410D01 homepage, which is easily updated by the end user.

Down Loading the Firmware Update:

1. Go to the 410D01 main page https://www.pcb.com/spec_sheet.asp?m=410d01
2. Select the Documents & Downloads Tab
3. Under “Additional Downloads” select file name “410D01-100b02_bootcode.zip
4. Open the zip file and save file 410D01-100b02_bootcode.s19 to convenient file location

Uploading the Firmware Update to the 410D01:

1. Connect the supplied BNC cable to the 410D01 and a host PC.
2. Apply 24 VDC to the 410D01
3. Load the PCB Signal Capture Software
4. Window loads, select available connection – USB
5. Click OK, red bar at the bottom of the page should turn green confirming a proper connection.
6. Select the tools menu tab in the left hand corner of the screen
7. Once in the tools Menu, select “Update Firmware”



PCB PIEZOTRONICS, INC – CORPORATE HEADQUARTERS

3425 Walden Avenue, Depew, New York 14043-2495 USA

Toll-Free: 800 828 8840

info@pcb.com

www.pcb.com

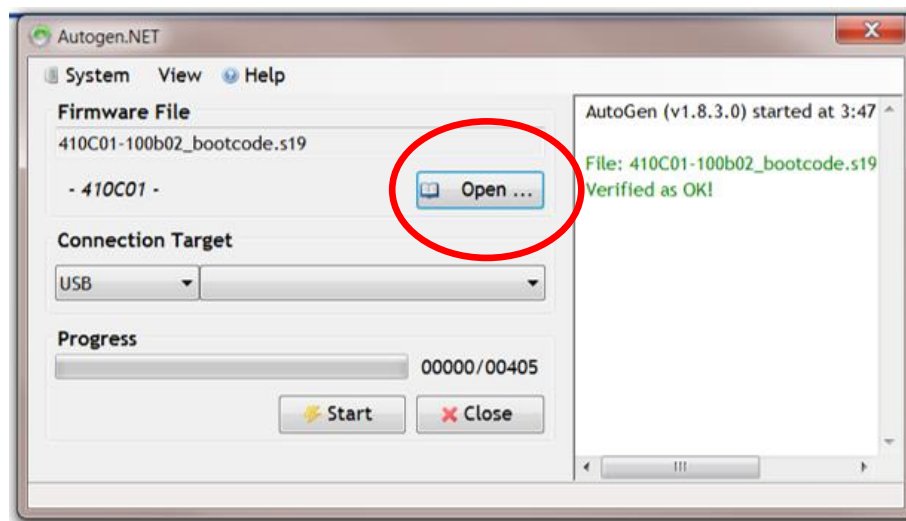
AS9100 and ISO9001 Certified

ISO17025 Accredited

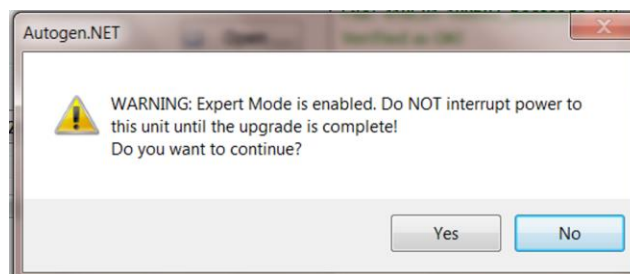
410D01 Firmware Update Instructions

Uploading the Firmware Update to the 410D01 (continued)

8. Firmware update window loads
9. Select the 'Open' Button



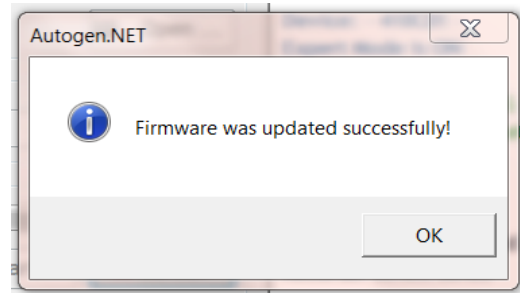
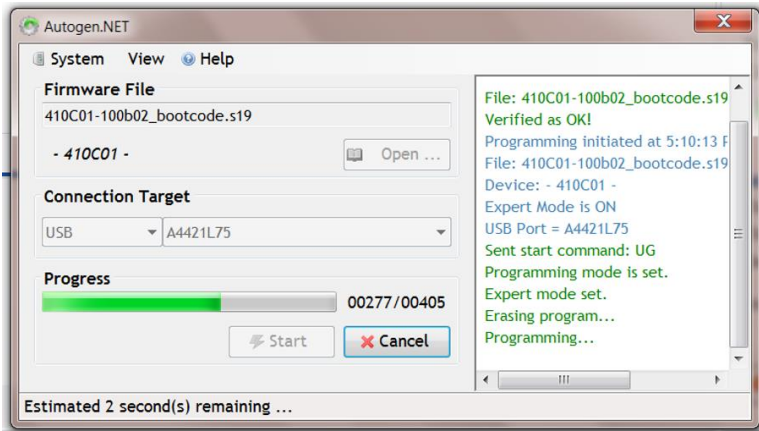
10. System browser window opens, select file 410D01 – 100b02_bootcode.s19 that you saved in step 4 of the “Down Loading the Firmware Update”
11. The firmware update window displays the firmware update file name indicates **(verified as OK!)**
12. Click Start button, firmware updates begins
13. Warning messages appears, do not interrupt power, select yes to continue.



410D01 Firmware Update Instructions

Uploading the Firmware Update to the 410D01 (continued)

14. Firmware updates continues and completes in a few seconds.



15. Restart the SignalCapture Software.